

Office Space for **Sublease**

1201 Third

1201 3rd Avenue | Seattle, WA

Space highlights

- Suite 1600: 4,267 RSF available
- Sublease through 8/30/2025
- Mostly open layout with a mix of conference rooms
- Furniture available

Building highlights

- Easy access to I-5, Highway 99, I-90, and public transit
- Bike storage, fitness facility, conference room, and car charging stations

Lease inquiries

Brooke Dowling

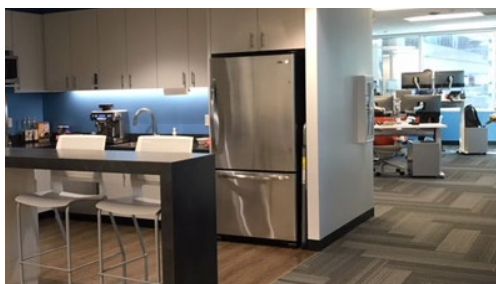
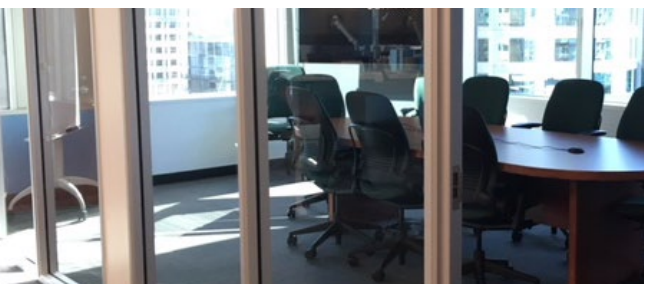
+1 206 607 1746

brooke.dowling@am.jll.com

Adam Chapman

+1 206 310 1771

adam.chapman@am.jll.com



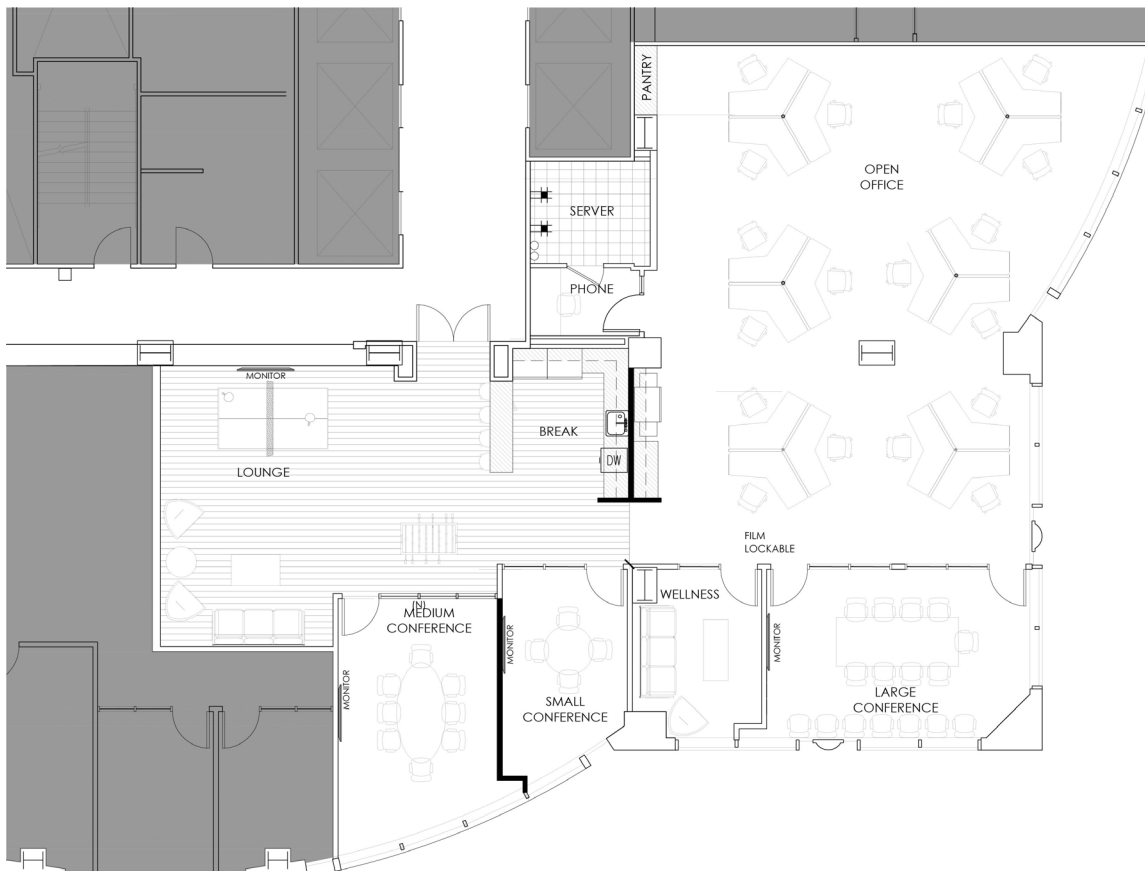
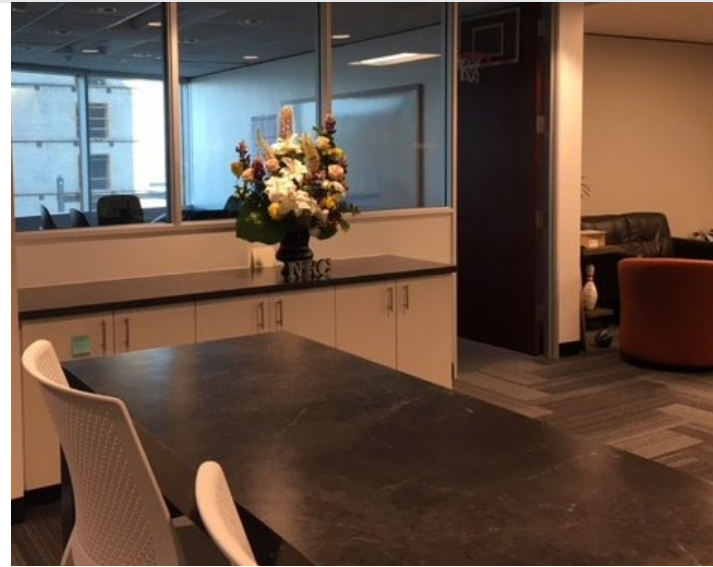
Jones Lang LaSalle Brokerage, Inc.
© 2020 Jones Lang LaSalle IP, Inc.
All rights reserved. All information contained herein is from sources deemed reliable; however, no representation or warranty is made to the accuracy thereof.

1201 Third

Floor 16 | 4,267 RSF

100
Transit Score

99
Walk Score



Lease inquiries

Brooke Dowling

+1 206 607 1746

brooke.dowling@am.jll.com

Adam Chapman

+1 206 310 1771

adam.chapman@am.jll.com

