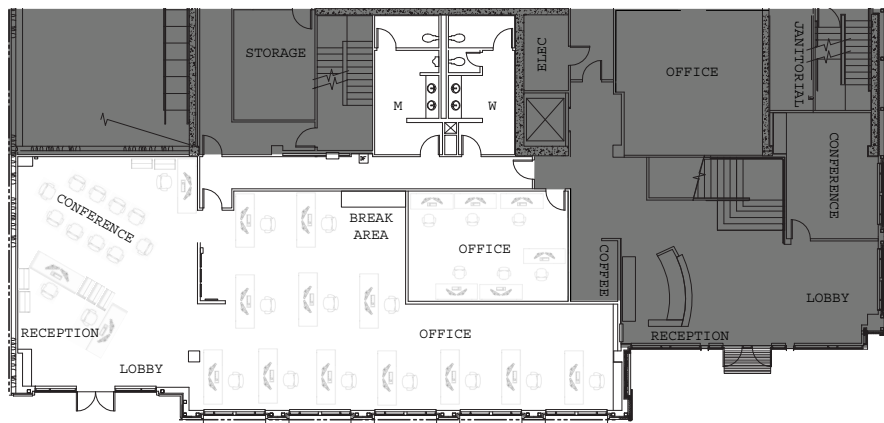


215 Westlake Avenue North



For Sublease



Office space for sublease

3,200 RSF | Available June 1, 2020; flexible lease term

Features

- Private front entrance
- Reception area
- Massive, street level windows
- Central location within South Lake Union
- Walking distance to shops, restaurants, Whole Foods, Denny Park, cafes, and transit

For more information, contact:

Lisa Stewart
+1 206 607 1741
lisa.stewart@am.jll.com

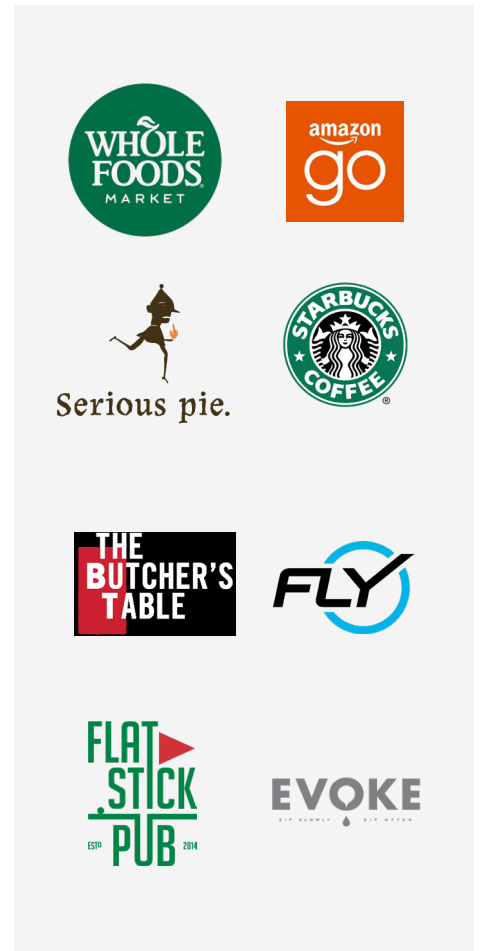
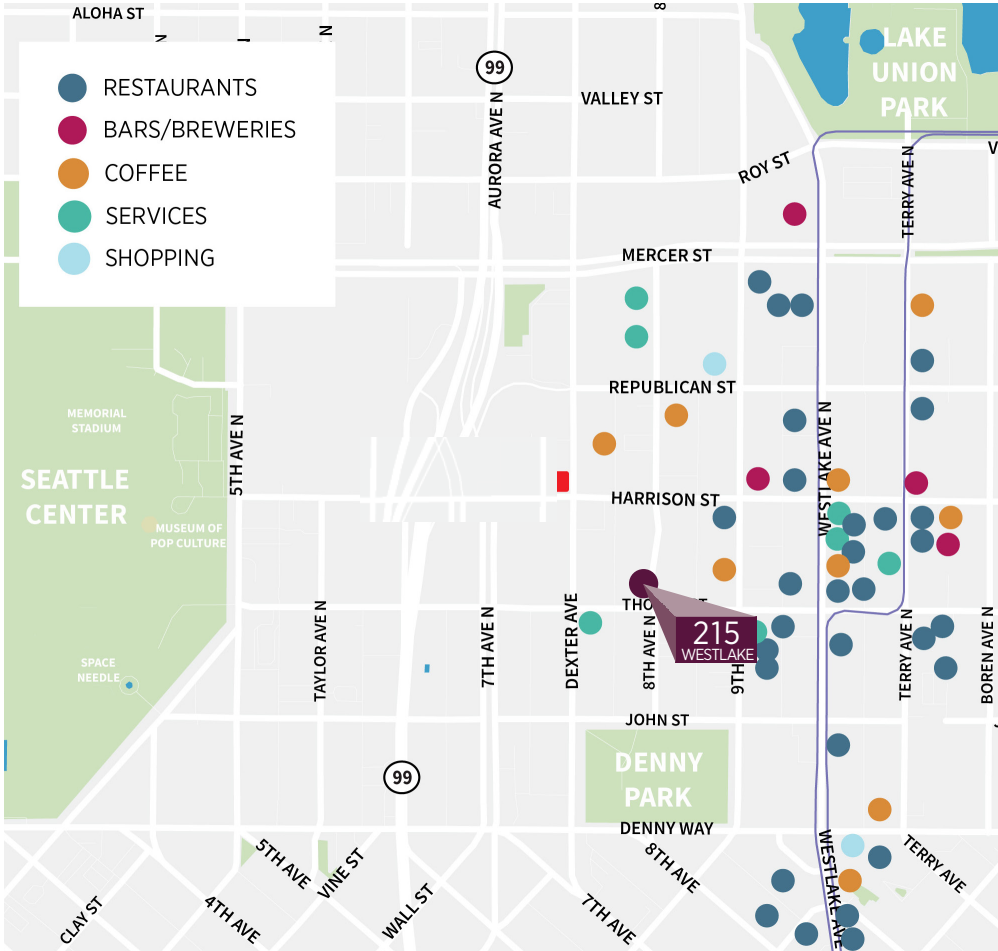
Connor Raffety
+1 206 437 1006
connor.raffety@am.jll.com

Jones Lang LaSalle Brokerage, Inc.

DISCLAIMER © 2020 Jones Lang LaSalle IP, Inc. All rights reserved. All information contained herein is from sources deemed reliable; however, no representation or warranty is made to the accuracy thereof

For Sublease

NEARBY AMENITIES



LOCATION

Centrally located with proximity to the amenities of both South Lake Union and Seattle Center. Immediately accessible to the new ingress and egress routes for the Hwy-99 tunnel, providing convenient north-south travel.



Jones Lang LaSalle Brokerage, Inc.

DISCLAIMER © 2020 Jones Lang LaSalle IP, Inc. All rights reserved. All information contained herein is from sources deemed reliable; however, no representation or warranty is made to the accuracy thereof