



Office space for *sublease*

2324 Eastlake Avenue East | Seattle WA 98103

## 2324 Eastlake

### Space Highlights

- Floor 5: 9,617 RSF
- Floor 3: 3,675 RSF
- Lease separately or together for a total of 13,292 RSF
- Additional 2,650 RSF available in adjacent suite on floor 3
- Sublease term through 12/31/2025
- Below market rental rate
- Great tech space, mostly open with large offices or meeting rooms
- Furniture potentially available
- Available now

**Adam Chapman**

+1 206 521 2672

[adam.chapman@am.jll.com](mailto:adam.chapman@am.jll.com)

**Blair Stern**

+1 206 714 9502

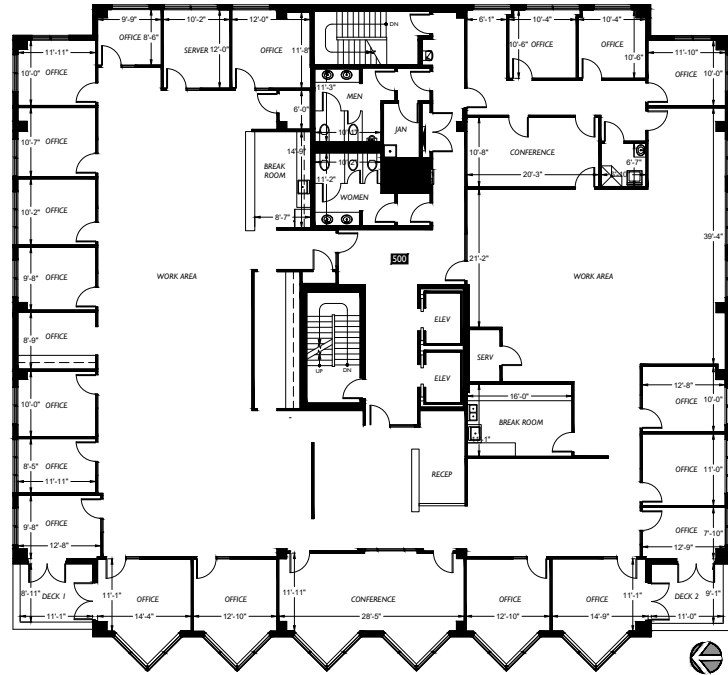
[blair.stern@am.jll.com](mailto:blair.stern@am.jll.com)



Jones Lang LaSalle Brokerage, Inc.  
© 2020 Jones Lang LaSalle IP, Inc. All rights reserved. All information contained herein is from sources deemed reliable; however, no representation or warranty is made to the accuracy thereof.

# 2324 Eastlake for *sublease*

**Floor 5: 9,617 RSF**



**Adam Chapman**

+1 206 521 2672

[adam.chapman@am.jll.com](mailto:adam.chapman@am.jll.com)

**Blair Stern**

+1 206 714 9502

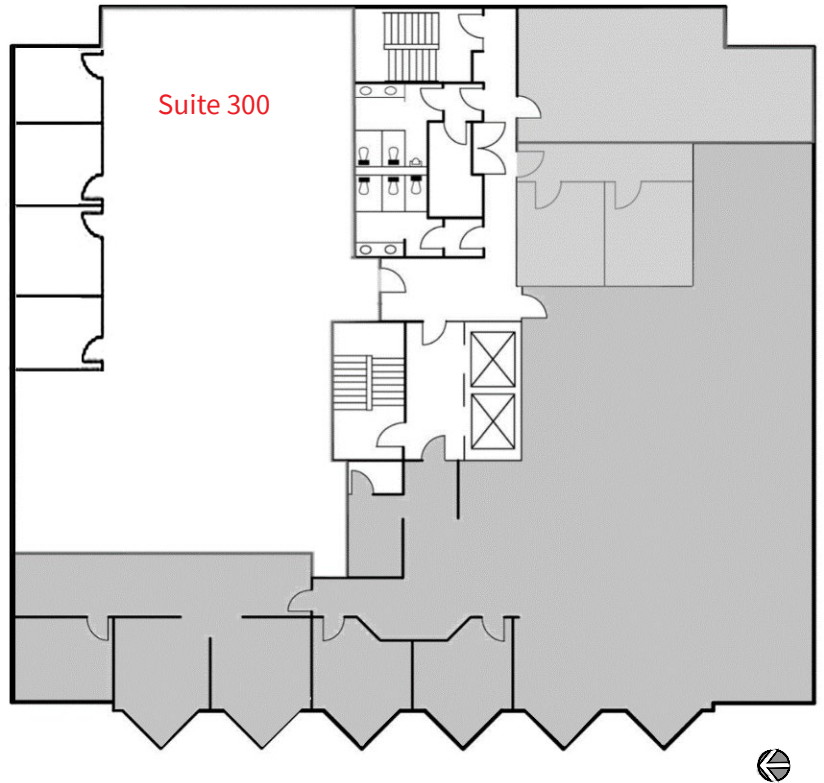
[blair.stern@am.jll.com](mailto:blair.stern@am.jll.com)

Jones Lang LaSalle Brokerage, Inc. | [www.jll.com/seattle](http://www.jll.com/seattle)

2020 Jones Lang LaSalle IP, Inc. All rights reserved. All information contained herein is from sources deemed reliable; however, no representation or warranty is made to the accuracy thereof.

# 2324 Eastlake for *sublease*

Floor 3: 3,675 RSF



**Adam Chapman**

+1 206 521 2672

[adam.chapman@am.jll.com](mailto:adam.chapman@am.jll.com)

**Blair Stern**

+1 206 714 9502

[blair.stern@am.jll.com](mailto:blair.stern@am.jll.com)