



3,531 SF

Office space for sublease

520 Pike Tower

520 Pike Street | Seattle, WA 98101



Sublease highlights

- + Water and city views
- + Updated lighting and ceiling
- + Fully furnished, flexible build-out:
 - + 7 private offices
 - + 2 conference rooms
 - + 4 work stations
 - + Work/lunch room
- + Master lease expiration date: November 30, 2022
- + Extended term available



Building snapshot

- + Recently renovated with a spectacular concrete and glass facade that houses a calm passageway between the outside and office space
- + Within walking distance to Pike Place Market
- + On-site fitness center, auditorium and boardroom
- + CV charging stations in parking garage
- + Card-access bike storage
- + LEED Gold (EB)

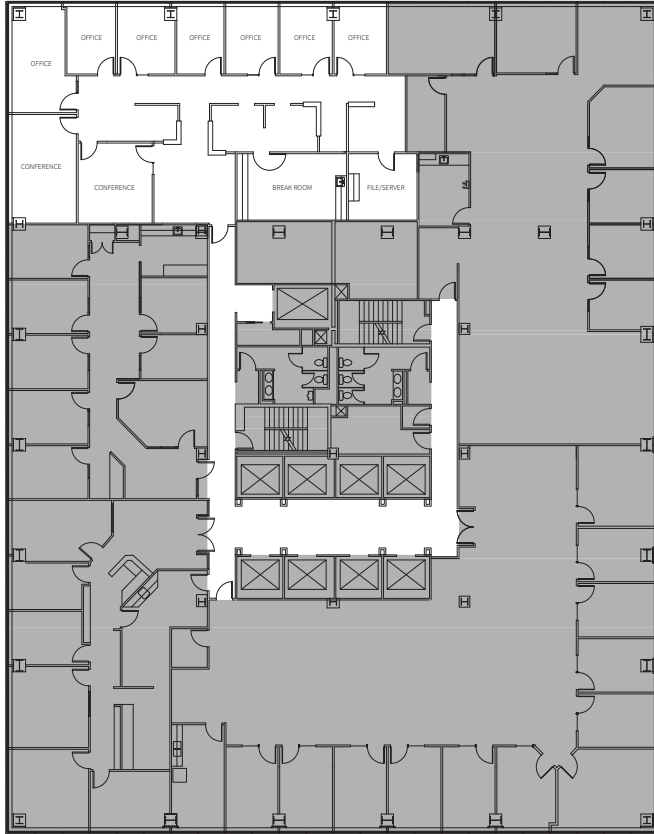




Floor plan

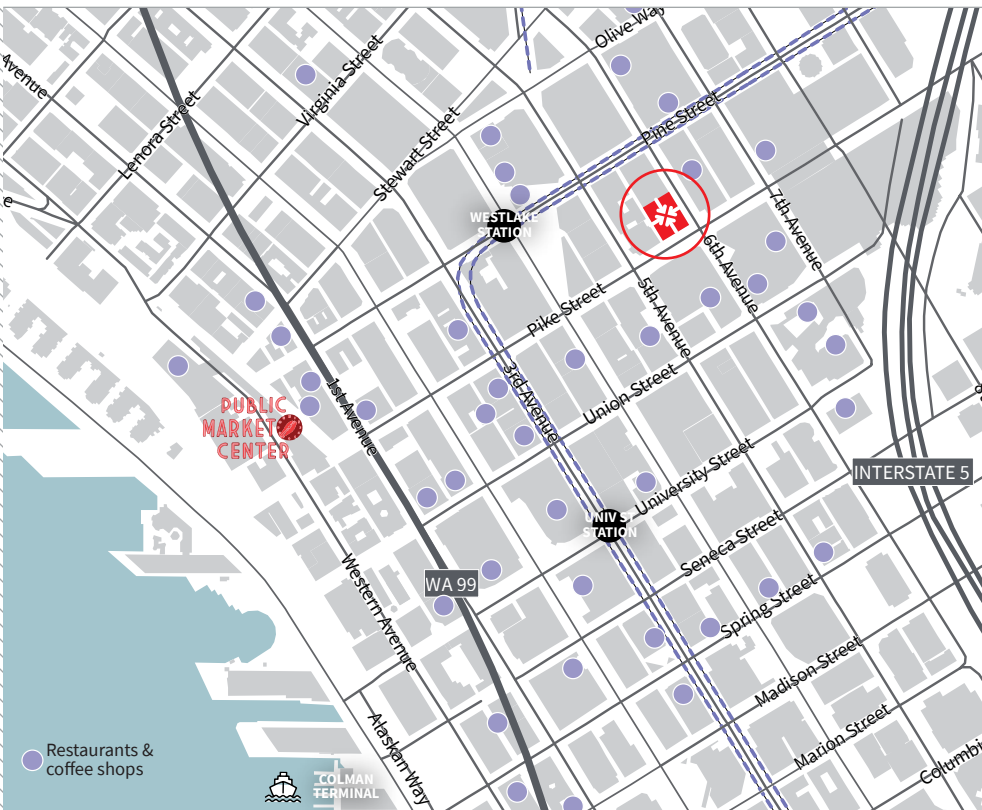
↑
North

Suite 1515



Building location

- + Adjacent to hotels, parking, shopping, restaurants
- + Near light rail tunnel & bus service: Walker's and Rider's paradise



CONTACT:

Lisa Stewart

+1 206 607 1786

lisa.stewart@am.jll.com

Jim Allison

+1 206 607 1787

jim.allison@am.jll.com

© 2020 Jones Lang LaSalle IP, Inc. All rights reserved. All information contained herein is from sources deemed reliable; however, no representation or warranty is made to the accuracy thereof. Jones Lang LaSalle Brokerage, Inc.