

705 UNION STATION



SUBLEASE

705 5th Ave | 8th Floor | Pioneer Square



Premier Transit Hub

onsite lightrail, direct access to I-5 & I-90, and steps away from King Street Station



Work in style


high end creative space with exposed ceilings



Building Amenities

include a state of the art conference room and fitness center

Space Features

- » **7,208 RSF** of contiguous space available on the 8th floor
- » **View Virtual Tour** 
- » Sublease term through 1/31/2030
- » Shorter sublease term available
- » Plug & Play fully furnished space
- » Unobstructed views of Mount Rainier



Blair Stern
+1 206 714 9502

blair.stern@am.jll.com

Chris Hughes
+1 206 331 1945

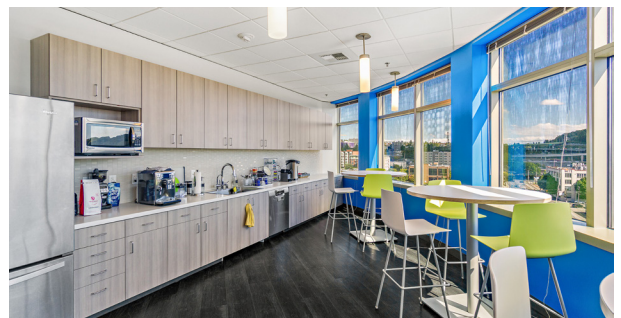
chris.hughes@am.jll.com



Walking Distance
to many of Seattle's Best Restaurants
including Bar Sajor, Salumi,
Tamarind and Uwajimaya

705
UNION STATION
for *sublease*

8th Floor
7,208 RSF



[Explore in 3D](#)

