

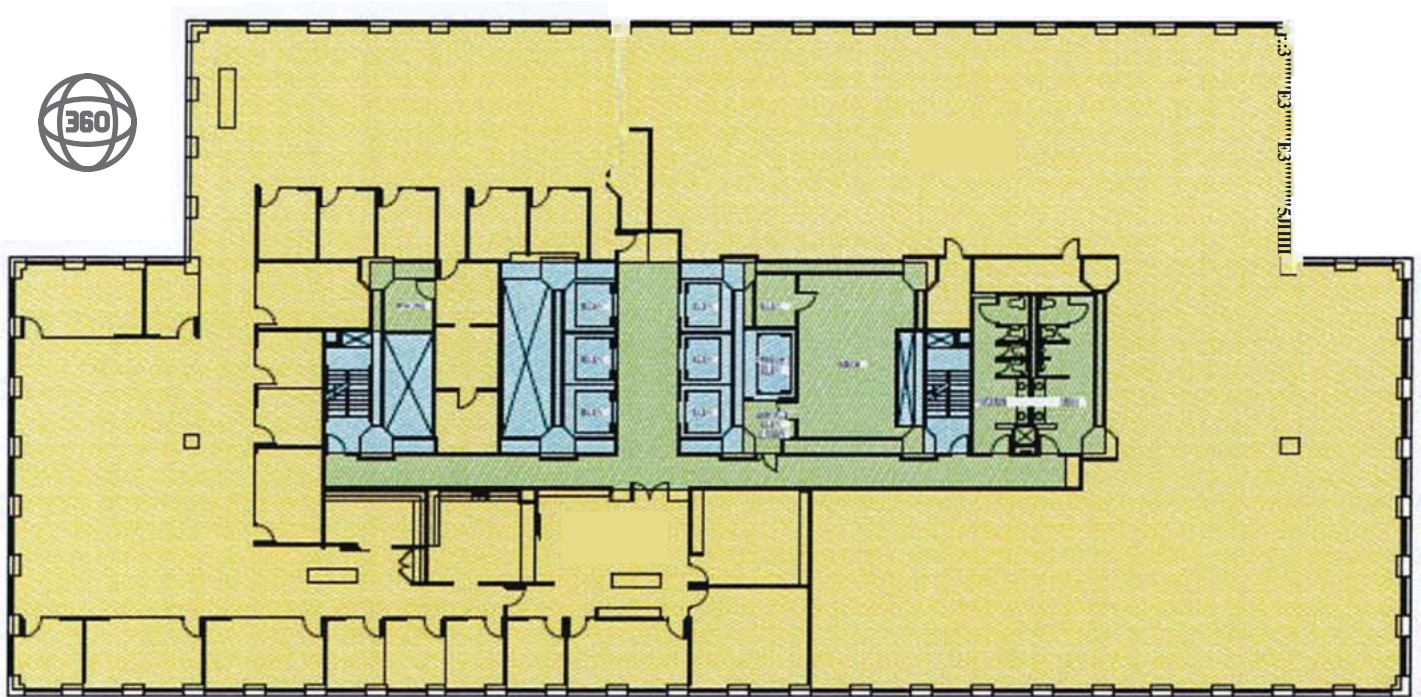


Office space for *sublease* Century Square

1501 4th Avenue Seattle WA

Space highlights

- 11,922 RSF on the 5th floor
- Available immediately
- Flexible lease term
- Space includes mix of private offices and open work space
- [Click to view virtual tour](#)



Lease inquiries **Pat Pendergast**

206 521 2663

pat.pendergast@am.jll.com

Jones Lang LaSalle Brokerage, Inc.

© 2021 Jones Lang LaSalle IP, Inc. All rights reserved.

All information contained herein is from sources deemed reliable; however, no representation or warranty is made to the accuracy thereof.