

# CHAMPION BLDG



## SUBLEASE

1926-1928 Pike Place | Seattle, WA

**IDEAL MOVE-IN** 'plug & play' for 35 employees

**OFFICE EFFICIENCY** open plan + two kitchens + conference rooms & exposed ceilings

**CULTURE FIT** perfect space for a growing tech company in a premier location

4,711

SQ FT

**100**  
transit  
score

term thru  
**7/21**



## HIGHLIGHTS

- Historic building located in vibrant Pike Place
- Top floor stunning water views of Elliott Bay and the waterfront right from your desk
- Easy access to major transportation for all employees

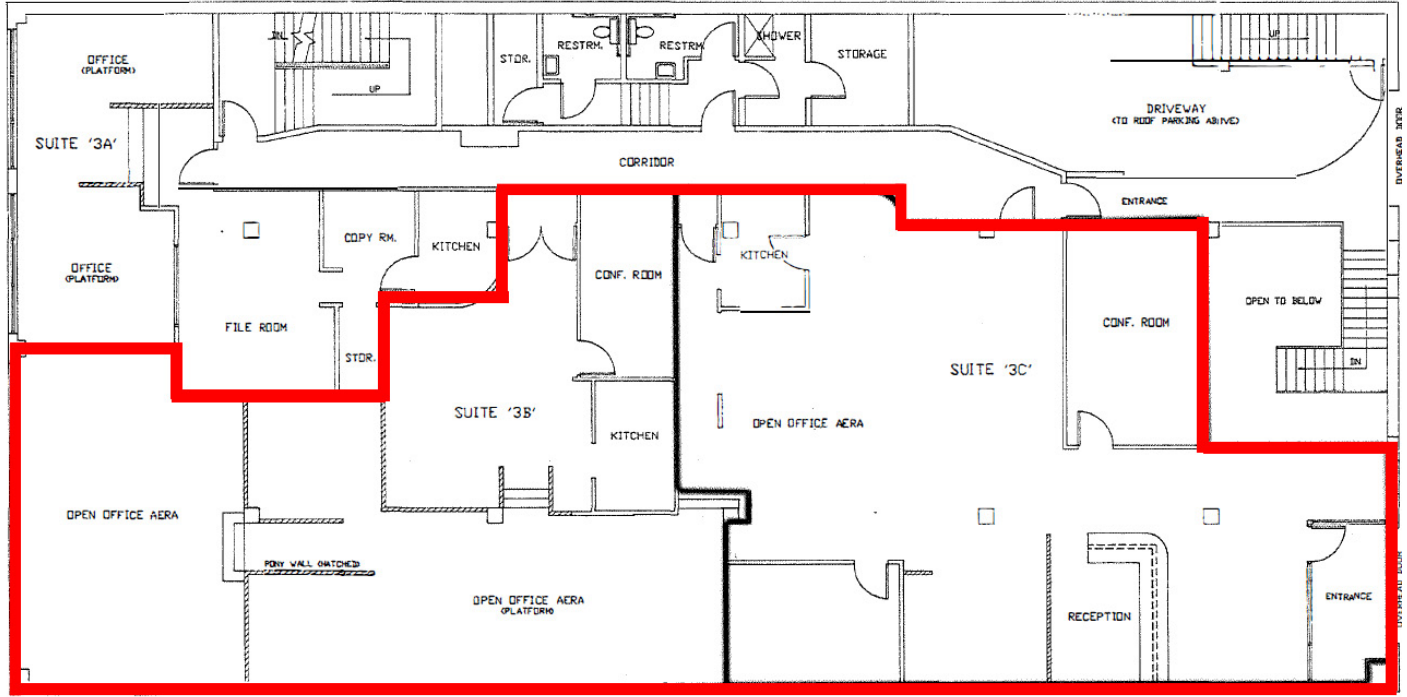


**Mark To**  
+1 206 521 2666  
mark.to@am.jll.com

**Pat Pendergast**  
+1 206 521 2663  
Pat.pendergast@am.jll.com

# 4,711

SQ FT



**Lease inquiries** Mark To • +1 206 521 2666  
Pat Pendergast • +1 206 521 2663

