



11,268 RSF

Office space available for sublease

Pacific Commercial Building

240 2nd Avenue South | Seattle, WA 98104



Sublease highlights

- + 11,268 RSF (floors not available separately)
- + Flexible lease term
- + Creative office space with exposed brick and high ceilings
- + Furniture available
- + Mix of open work space and conference / meeting rooms
- + Space includes in-suite restrooms and a kitchen



Building snapshot

- + Renovated landmark building located in the heart of the Pioneer Square neighborhood
- + Expansive windows allow for ample natural light
- + Close proximity to many retail and restaurant amenities, transit, and I-5

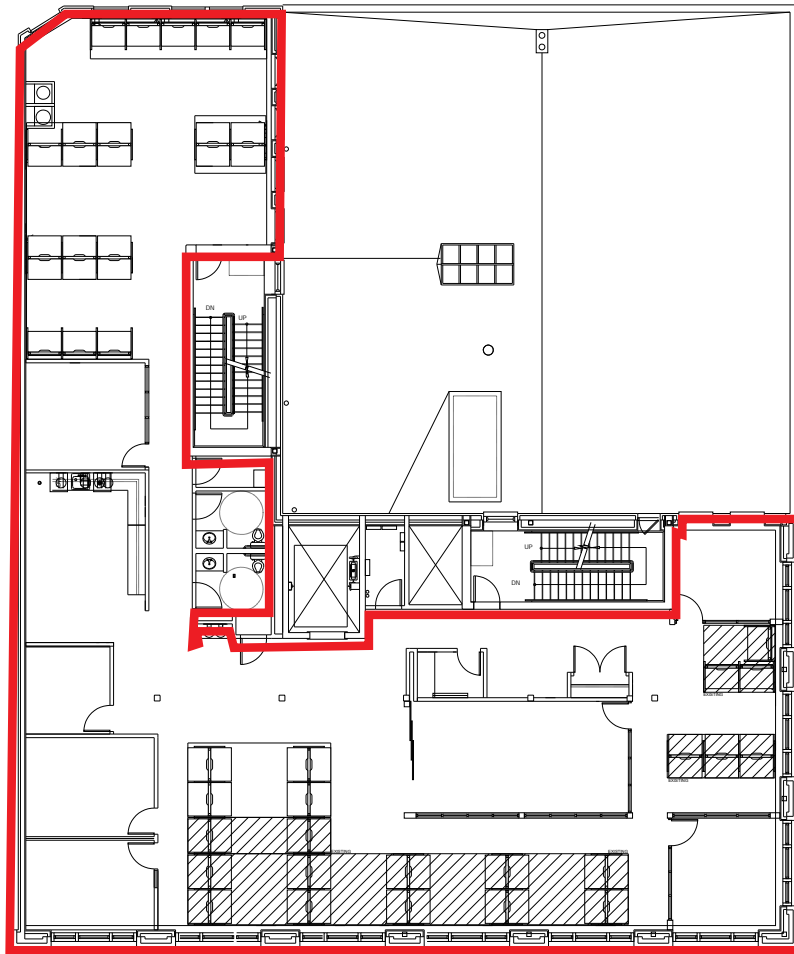


TAKE A TOUR OF THE 4TH FLOOR

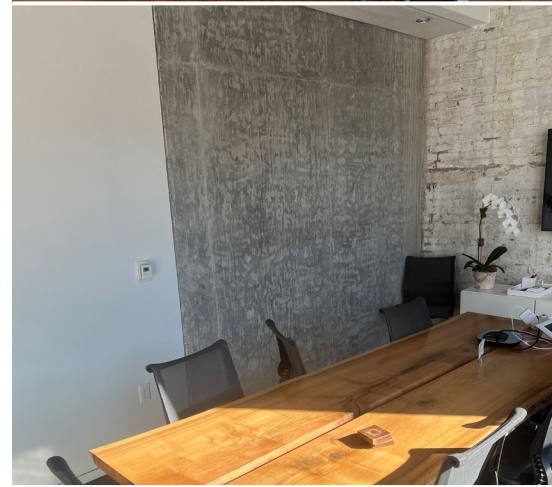


Floor plan

Floor 3



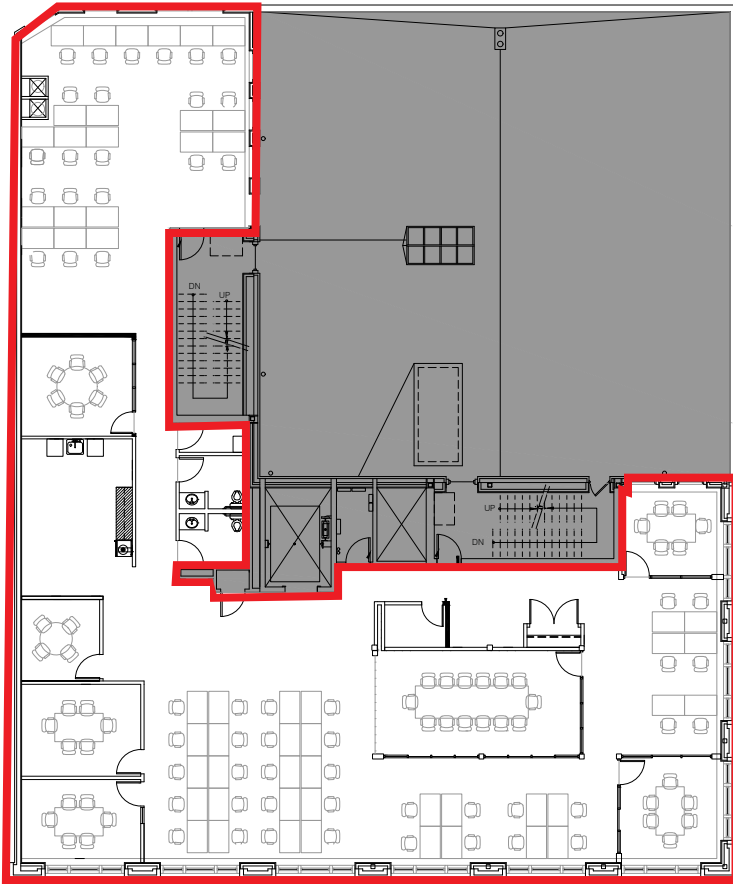
*Floors not available separately



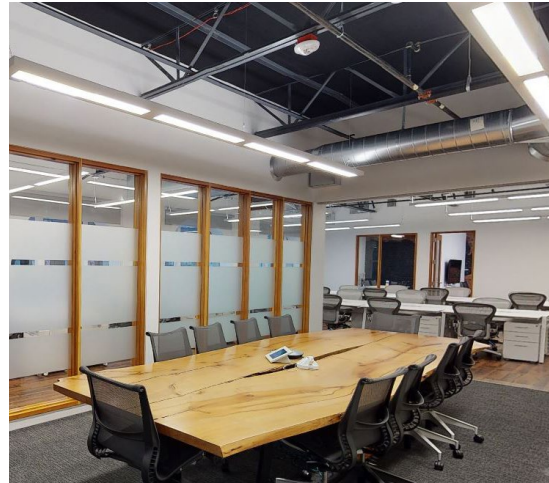


Floor plan

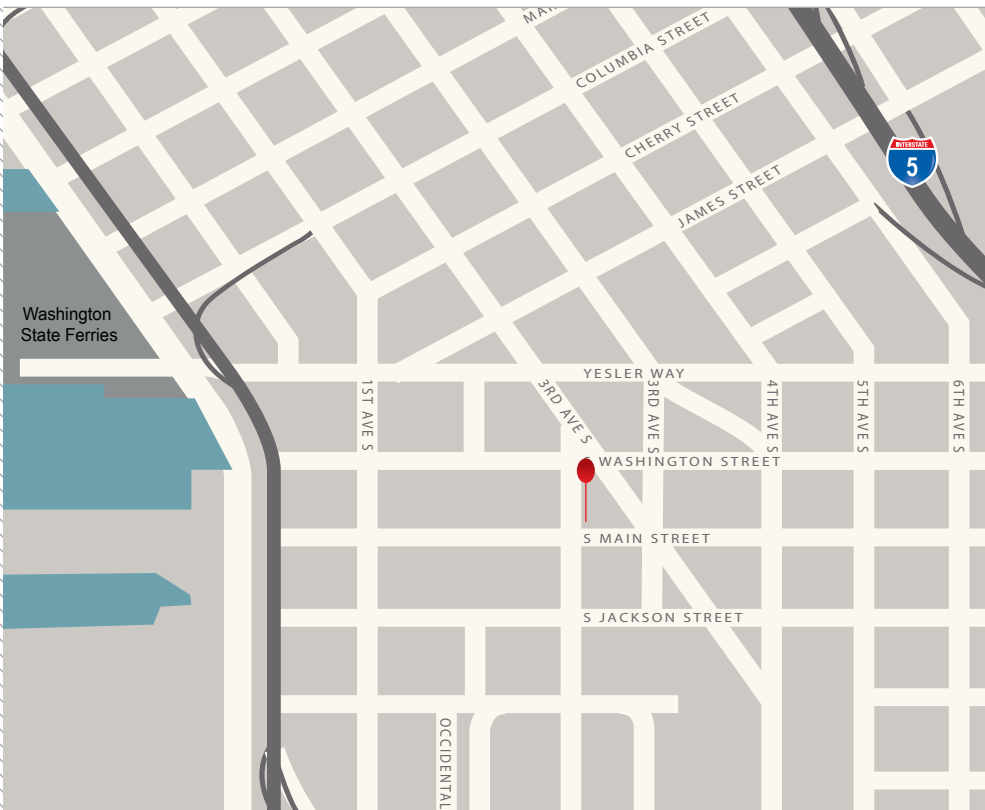
Floor 4 | 5,324 RSF



*Floors not available separately



Building location



CONTACT:

Pat Pendergast

+1 206 521 2663

pat.pendergast@am.jll.com

Adam Chapman

+1 206 521 2672

adam.chapman@am.jll.com

© 2022 Jones Lang LaSalle IP, Inc. All rights reserved. All information contained herein is from sources deemed reliable; however, no representation or warranty is made to the accuracy thereof. Jones Lang LaSalle Brokerage, Inc.