

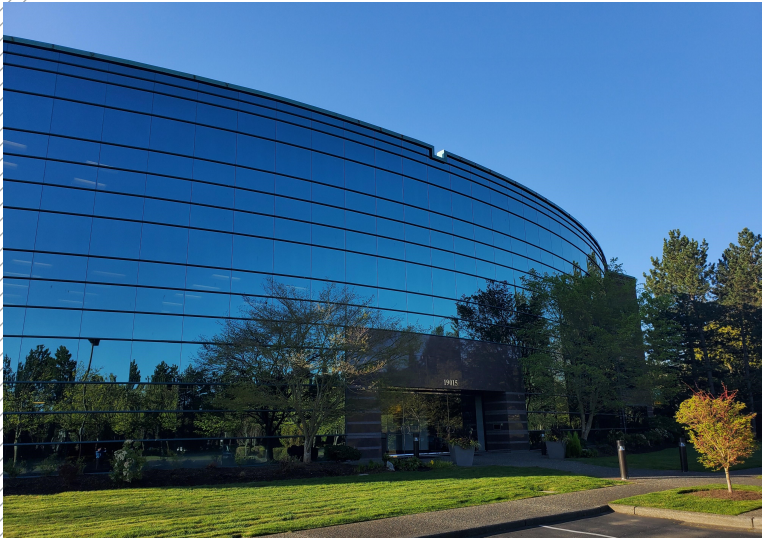


5,200 RSF

Office space for sublease

19015 North Creek Parkway, Suite 101 | Bothell, WA 98011

Plaza at North Creek - North Building



CONTACT:

Sam Dommer +1 425 974 4012 sam.dommer@am.jll.com

Chris Hughes +1 425 974 4087 chris.hughes@am.jll.com

© 2021 Jones Lang LaSalle IP, Inc. All rights reserved. All information contained herein is from sources deemed reliable; however, no representation or warranty is made to the accuracy thereof. Jones Lang LaSalle Brokerage, Inc.



Building snapshot

- + State of the art, private fitness facility updated last year
- + Showers, lockers, and bike storage
- + 21 surface parking stalls
- + Floor to ceiling windows, providing an abundance of natural light



Sublease highlights

- + Plug and play with furniture available
- + High-end finishes
- + Term through 7/31/2024; possible extension available
- + Call for rates
- + 14 private offices with desks and chairs, and 9 cubicles
- + Conference room with 80" wireless Samsung display TV/monitor
- + Office space is wired with high speed fiber optics
- + Office is equipped with high-end Nuvo stereo system in four quadrants remotely controlled by Google assistant or Nuvo app
- + Polycom/Voip phone system available

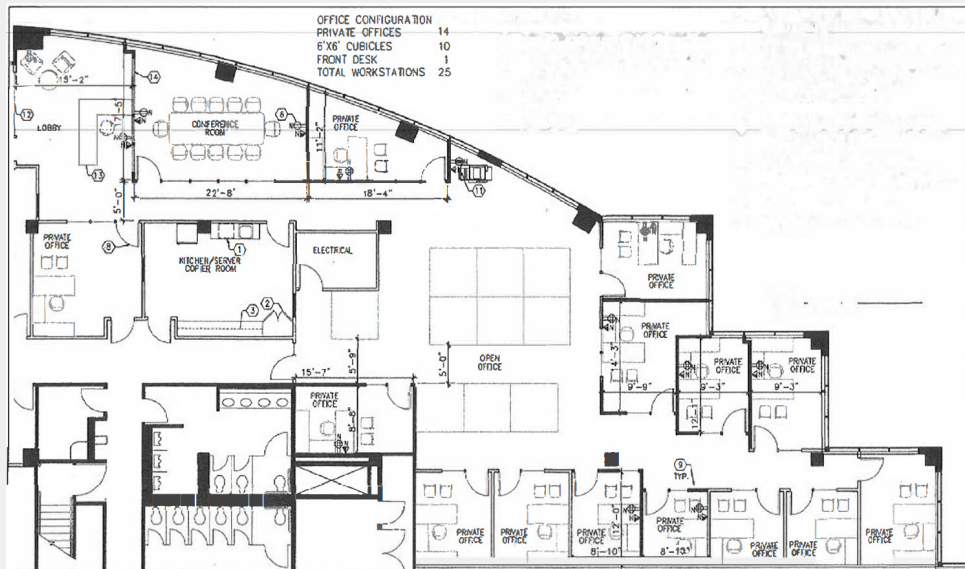


Property location

- + Conveniently located 3 blocks from I-405
- + Easy access to jogging & walking trails
- + Hotels within walking distance (Wyndham Garden Hotel & Residence Inn)
- + Walking distance to 10 eateries, 2 Starbucks, and a gas station



Floor plan



Suite 101

