

Office Space for **Sublease**

Northcoast Building



Court in the Square
401 2nd Avenue S | Seattle, WA

Space highlights

- 3,764 RSF available for sublease on the 5th floor
- **\$25.00/RSF/YR | fully serviced**
- Immediately available
- Sublease term through July 31, 2022
- Mix of open space, private offices, and conference/meeting rooms
- Furniture can be made available

Building highlights

- Considered a "walker's Paradise" with a Walk Score of 97
- Easy access to I-5, I-90, and SR 99
- Located two blocks from King Street Station and the Seattle Ferry
- Steps away from ample retail and restaurants of Pioneer Square including Salumi, Il Terrazzo, General Porpoise Doughnuts, Taylor Shellfish and Cafe Umbria

Clay Nielsen

+1 206 521 2664

clay.nielsen@am.jll.com

Brooke Dowling

+1 206 607 1746

brooke.dowling@am.jll.com



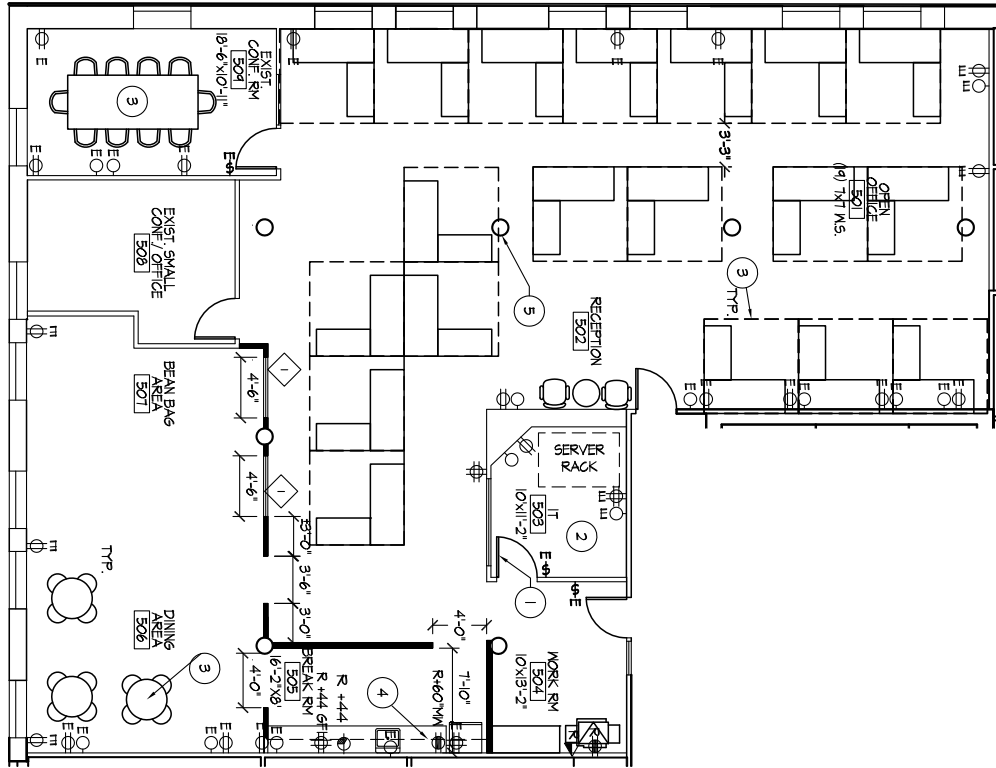
Jones Lang LaSalle Brokerage, Inc.
© 2020 Jones Lang LaSalle IP, Inc.
All rights reserved. All information contained herein is from sources deemed reliable; however, no representation or warranty is made to the accuracy thereof.

Northcoast Building

Floor 5 | 3,764 RSF

100
Transit Score

97
Walk Score



Lease inquiries Clay Nielsen • Brooke Dowling • +1 206 607 1700

