



Office Space for **Sublease**

800 Fifth

800 5th Avenue | Seattle, WA

Space highlights

- 9,151 RSF available on 37th floor
- Sublease term through December 2027
- Open floor plan

Building highlights

- Common area renovations including lobby remodel, new seating areas & updated entrance
- Outdoor plaza & garden area with seating
- Fitness center with showers & towel service
- Excellent access to public transit
- Steps from dining, hospitality & retail options



Doug Hanafin

+1 206 521 2661

doug.hanafin@am.jll.com

Brooke Dowling

+1 206 607 1746

brooke.dowling@am.jll.com

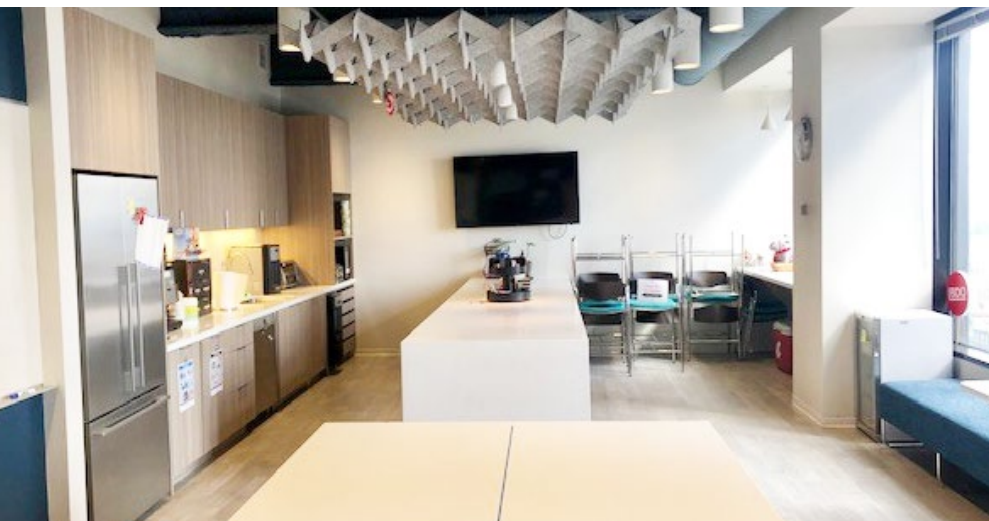
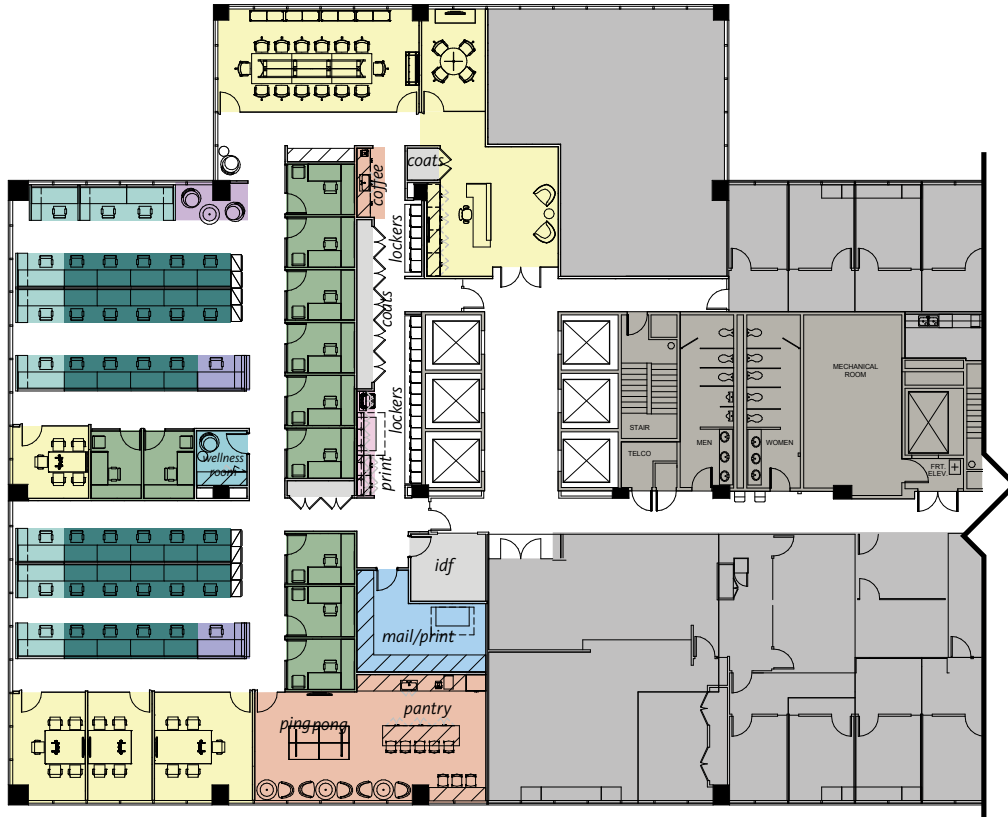


800 Fifth

Floor 37 | 9,151 RSF

100
Transit Score

99
Walk Score



Doug Hanafin
+1 206 521 2661
doug.hanafin@am.jll.com

Brooke Dowling
+1 206 607 1746
brooke.dowling@am.jll.com

