

Office space for *sublease*

Woodinville Medical Center

17000 140th Ave NE, Woodinville WA

Space highlights

- 1st floor | 5,941 RSF
 - Available immediately
 - Sublease term through February 2027
 - Recently completed tenant improvements
 - Furniture can be made available
 - Exterior building signage can be available
- Abundant nearby amenities, including: restaurants, retail, wineries, grocery & more
- Over 4 : 1,000 RSF parking ratio



Emily Frankland
 +1 425 974 4041
 Emily.Frankland@am.jll.com

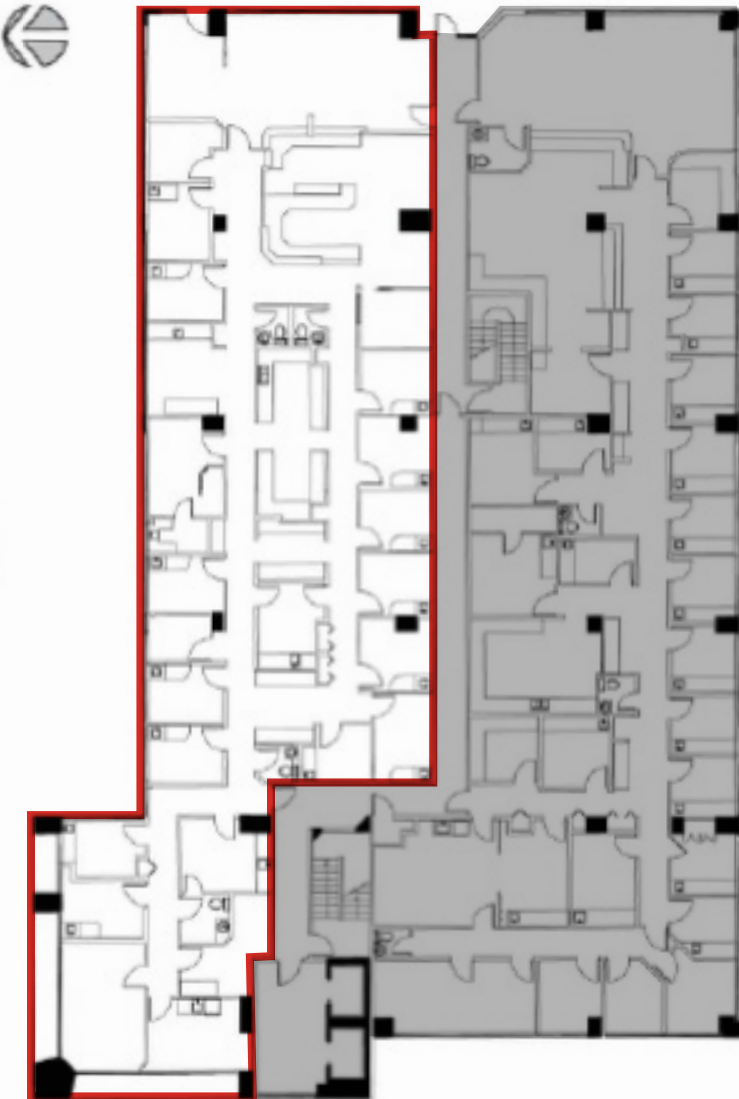


For *sublease*

Woodinville Medical Center

Floor 1

5,941 RSF



DISCLAIMER

Although information has been obtained from sources deemed reliable, Owner, Jones Lang LaSalle, and/or their representatives, brokers or agents make no guarantees as to the accuracy of the information contained herein, and offer the Property without express or implied warranties of any kind. The Property may be withdrawn without notice. If the recipient of this information has signed a confidentiality agreement regarding this matter, this information is subject to the terms of that agreement. ©2021. Jones Lang LaSalle. All rights reserved.

